



Catalogue
Knowledge - Experience - Technology

PSM

PETRO SAZEH MIHAN CO.
Grade-1 knowledge enterprise company



Products :

Control Globe Valve (Reciprocating / Rotary)
General & Control Ball Valve (Metal Seat / Soft Seat)
General & Control Butterfly Valve
High Temperature Valve (Let down / Desuperheater)
On / Off Valve & Shut Off Valve
Piston Valve
Safety Valve
Regulator Valve

Services :

HVOLF Coating
Ball Grinding
Reverse Engineering
Valve Repair
Pattern Making
Control Valve CV Test
Routine Tests For Valve
Special Valve Design and Manufacture

INDEX

- 01 Brief History
- 02 Departments
- 04 Services
- 06 List of equipment
- 07 Laboratory & Quality Control Equipment
- 10 Control Reciprocating Globe Valve (51000 Series)
- 12 Control Reciprocating Globe Valve (31000 Series)
- 14 Control Reciprocating Globe Valve (38000 Series)
- 16 General Ball Valve (35000 Series)
- 18 Control Ball Valve (45000 & 46000 Series)
- 22 General & Control Butterfly Valve (43000 & 53000 Series)
- 24 Rotary Globe Valve (62000 Series)
- 26 Let Down High Temperature Valve (66000 Series)
- 28 Desuperheater High Temperature Valve (65000 Series)
- 30 Piston Valve (10000 Series)
- 32 Safety Valve (57000 Series)
- 34 Pneumatic Actuators (63/ 62 – 98 / 97 Series)
- 36 Pressure Reducing Regulators (70000 Series)
- 40 Loop Test (Control Valve Capacity Test CV)
- 41 Sizing & Analysis
- 42 HVOF Thermal Spray
- 46 Clients



Certificate of Registration



پروانه تحقیق و توسعه



OHSAS ISO 18001



ISO 14001



ISO 9001



ISO 29001



گواهی صلاحیت



نتیجه ارزیابی

دانش بنیان

دانش بنیان تولیدی نوع ۱
در زمینه طراحی و تولید شیرهای کنترلی



پروانه بهره برداری



آدمه الی بساز ما باقیم



**PETRO SAZEH
MIHAN CO.**
PSM Grade-1 knowledge
enterprise company

Brief History

Petro Sazeh Mihan Co. was established by Mr. Rezaei and a team of experts in the field of control valves, in 1997. which has grown steadily to design and manufacture control valves with localized knowledge in Iran. We began our journey with refurbishing and repair of industrial valves. The efforts finally led to manufacturing control valves with actuators, through the utilization of the knowledge and experience gained by manufacturing and repair of control valves and actuators' components.

With the help of our exclusive knowledge and cutting-edge and fully automated machining tools, we design and manufacture industrial valves for the Aviation industry, Marine industry, Oil and Gas industry, and power plants.



Departments

Engineering

- PSM designs is a combination of proven engineering expertise with state of state-of-the-art technology,
- PSM engineers use advanced technical software & standards
- PSM employs its exclusive control valve sizing software

ENG

Production

- Grinding
- Pattern Making
- Production of all mechanical parts of valves
- Painting
- Valve testing
- Packing

Pro

HVOLF

- Coating and grinding of Balls up to 34-inch diameter
- Coating of Cylindrical parts up to 6000 mm in length
- Coating of Plate or smooth pieces to 6000 mm length & 2000 mm width
- Exclusive Engineering & QC system for Coating
- Commonly Sprayed coating materials including cermets (WC-Co,WC-Co-Cr) Chrome Carbide, MCrALY, Colmonoy (Nickel alloy). Stellite (Cobalt alloy).

HVOLF



Research and Development

R&D

- Improve the quality of products and services
- New product introduction to the company product portfolio
- Develop and provide technical knowledge for industrial designs
- Practical research in the required fields by related industries

QC

Quality Control

- Hardness Testing
- Pipe Wall Thickness Testing
- Fugitive Emissions Testing
- Dimensional Testing
- Paint Thickness Testing
- Torsion Testing
- Loop Test
- Hydro Test
- Leakage Test

R&M

Repair & Maintenance

- Testing all types of valves up to 42 inches and 2500 Class according to industry-accepted standards
- Testing all types of control valves according to industry-accepted standards
- Performing hydrostatic and leakage tests
- Reconstruction and repairs of all types of valves following the appropriate standards and requirements
- Manufacturing spare parts for all kinds of valves



Services



Special Valve Design & Manufacture

PSM Co. design & fabricate special valves such as :

Desuperheater valves,
Let Down valves,...

Control Valve Loop Test

PSM Co. has a special & exclusive control valve test bench (Size :1"~24" Class 150~2500)

Valve casting Pattern Making

Relying on the experience, advanced software, and technical knowledge of our experts, we make casting patterns professionally. Designed patterns in this company are made according to standards such as DIN 1511. These patterns are professionally made for the Control Globe valve (1 1/2" - 24") and Control Ball valve (2"-18").

HVOLF Coating

HVOLF process is one of the most popular thermal spray technologies and has been used in many industries due to its flexibility and the superior quality of coating produced compared to other thermal spray techniques. It produces a coating of higher bond strength and higher hardness together with lower porosity than other thermal spray processes such as the plasma spray.





Ball Grinding

PSM co. provides grinding and lapping services for all types of industrial valves with a smoothness of 0.2 microns and a spherical accuracy of 2 microns in the dimension's domain of 1/2 to 34 inches.



Reverse Engineering

The process of Reverse engineering includes studying an existing product (which is not possible to get its original design documents) and analyzing each part of it, to re-create the original design. Hence, our engineers, use the obtained results to develop and design various products in full compliance with the latest standard revisions.



Valve Repair

PSM Co. able repair all kind of valves such as: Control valves ,On/off valves, Ball valves ...



General Valve Standard Test

Test Benches :
5 Hydrostatic and leakage test benches
(Size : 1 / 2 - 32 in / Class : 150 - 2500)
Loop Test :
(Size : 1-24 in / Class : 150 - 2500)



List of equipment

01



3 unit of ball lathe machine in different sizes from 1 to 34 inches

3 unit of CNC grinding ball from 1 to 34 inches



02

03



2 unit of four axis CNC Milling Machines

3 unit of CNC lathe machines



04

05



Thermal Spray Coating HP-HVOLF 8 axis Robotic Thermal Spray facility for coating

2 Unit of Abrasive Blast Machine



06

07



5 Hydrostatic & Leakage test bench (Size : 1/2 - 32 inch Class : 150 - 2500)

Control Valve Special Loop Test (Size : 1 - 24 inch Class : 150 - 2500)



08

09



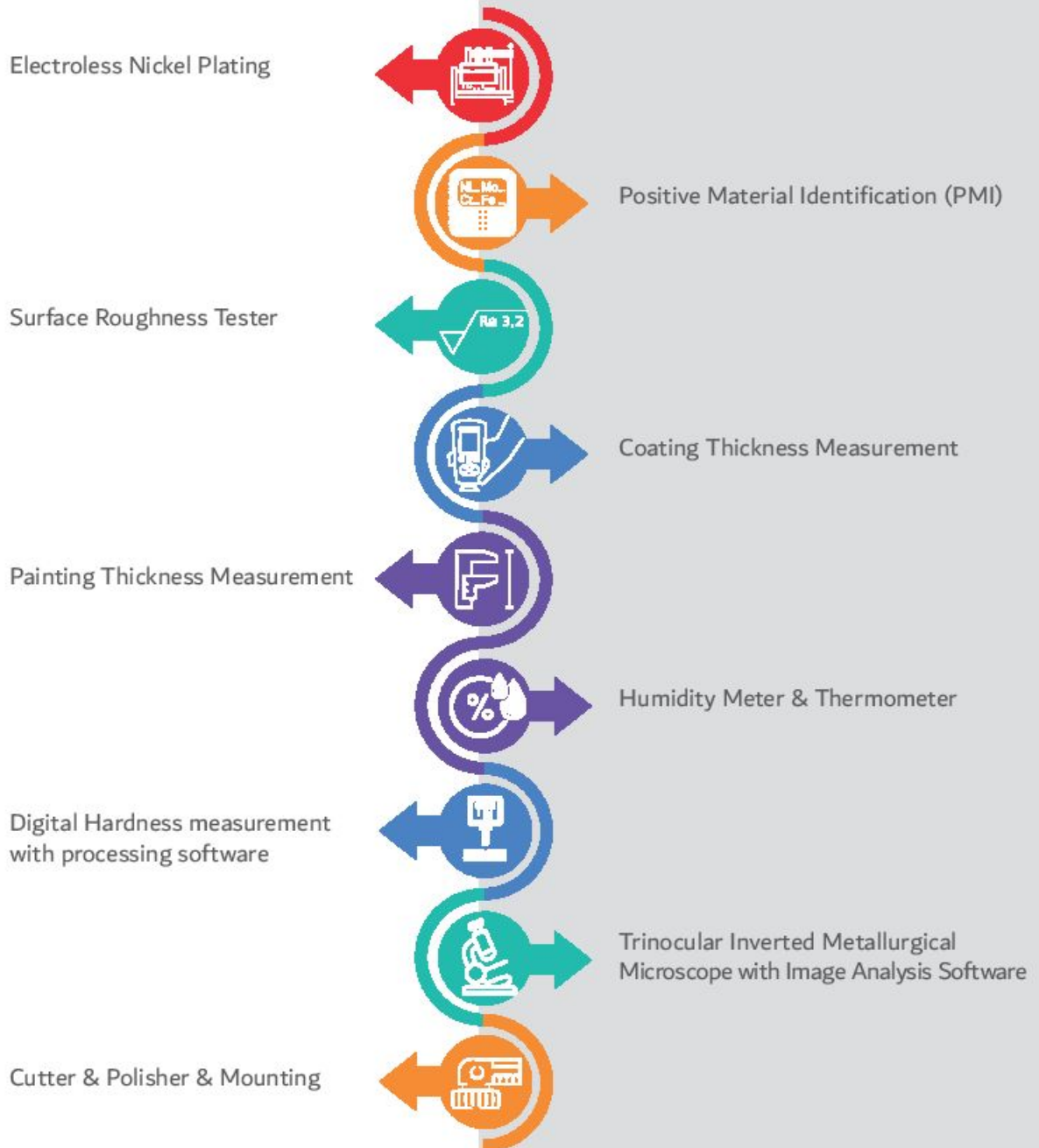
2 unit of CNC Boring Machines

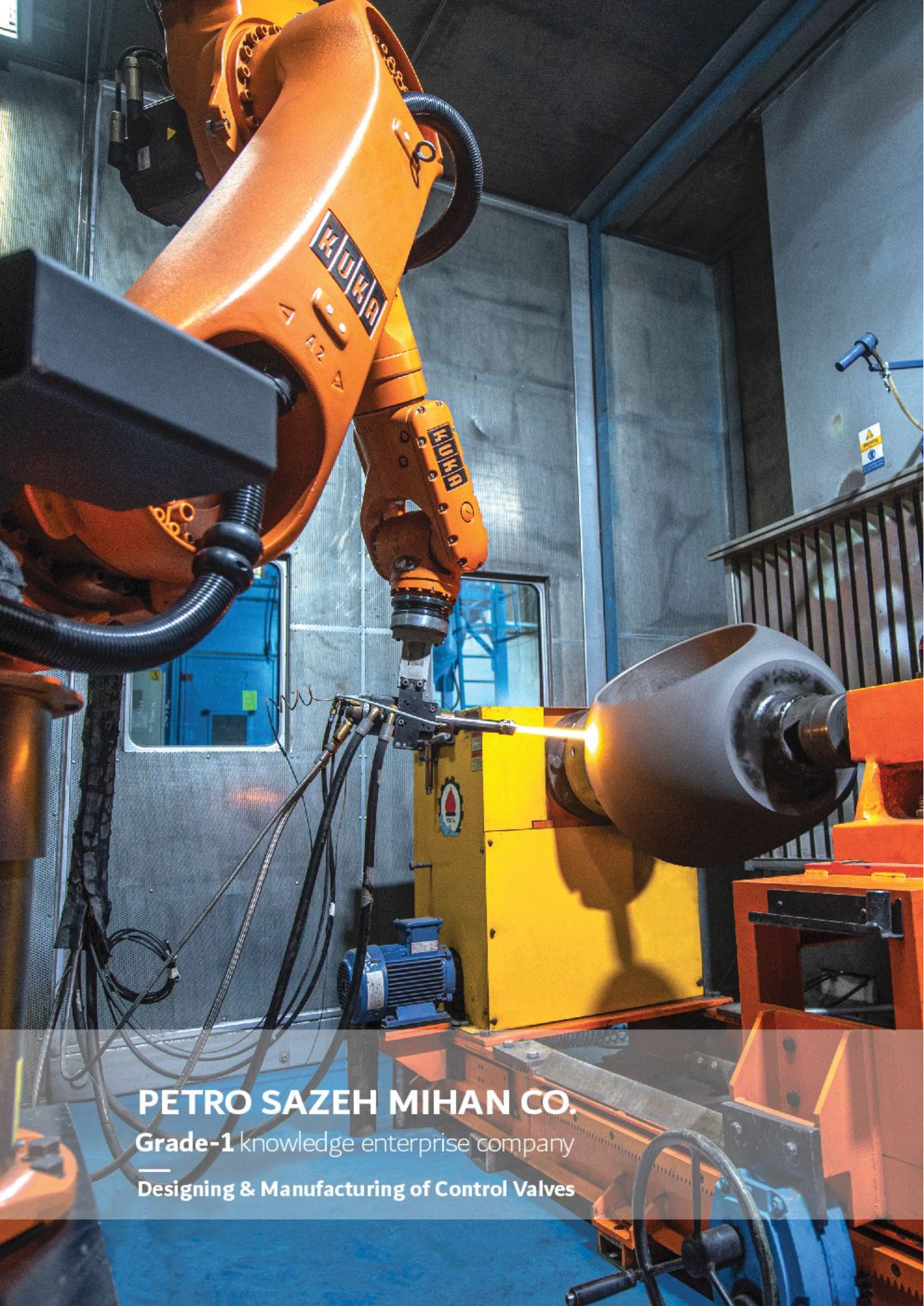
06

PETRO SAZEH MIHAN CO.



Laboratory & Quality Control Equipment





PETRO SAZEH MIHAN CO.

Grade-1 knowledge enterprise company

—
Designing & Manufacturing of Control Valves



Control Reciprocating Globe Valve (51000 Series)

A globe valve, is a type of valve used for regulating flow in a pipeline, consisting of a movable plug or disc element and a stationary ring seat in a body

Features :

Balanced
 Cage Guided
 Noise Control / Anti Cavitation
 Easy Maintenance and Customer Oriented
 Special Design and Fabrication Capability According to Client's Special Offers
 All the main fabrication steps such as Designing – Cage Drilling / Milling -Seat and Plug Coating Machining- Seat and Plug Lapping Test, Routine Tests, ... are doing by the PSM's exclusive equipment.

Options :

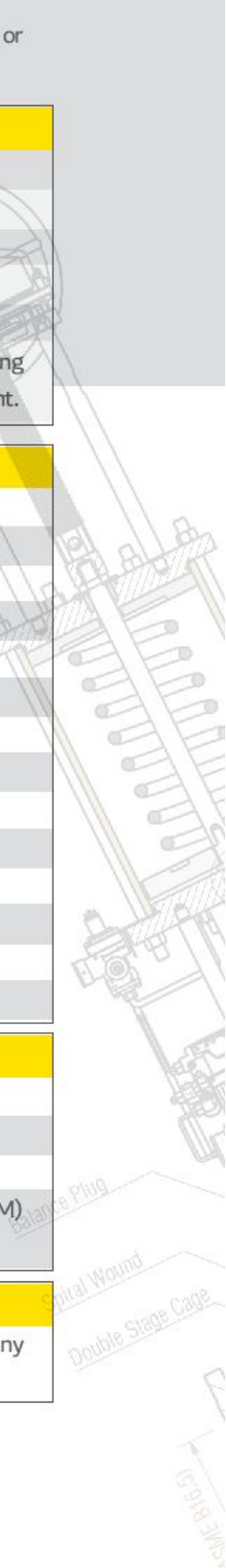
Linear / Equal / Quick Change / Modified Linear / Modified Equal Characteristics
 Multi Hole / Countered Cages
 Multi Stage Cage
 Standard / High Capacity
 Standard / Extension Bonnet
 Oxygen Service / Cryogenic / Standard
 Loop Test / CV Test
 Dead Band Test
 Hysteresis Test
 Metal / PTFE / Graphite Seal Ring
 Through / Angle Body
 Full/Reduced Trim
 Fieldbus Positioner / Special Instrument
 Spring Diaphragm / Piston Spring Actuators

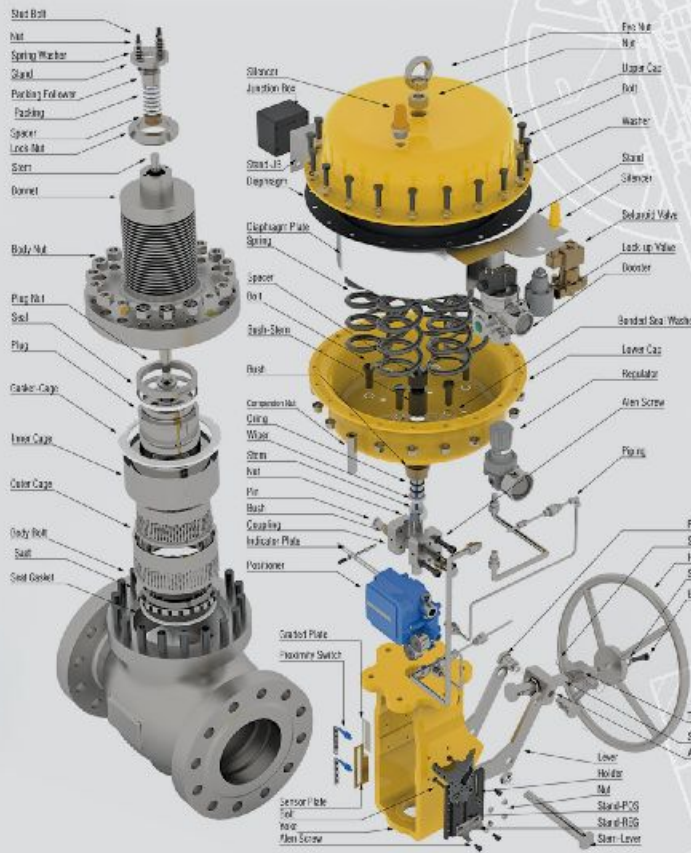
General Data :

Size : 2 - 24 in
 Class : 150 - 2500
 Connection : Weld (Socket / Butt), Threaded, Flanged (RF / RTJ)
 Body Material : Carbon Steel (A105), Stainless Steel (S.S316), Ductile Iron (WCB, WCC, CF8M, CF3M)
 Bronze, Monel, ...

Some of clients :

Pars Phenol Petrochemical Company / JAM Petrochemical Company / Arak Petrochemical Company
 Laleh Petrochemical Company





Control Reciprocating Globe Valve (31000 Series)

A globe valve, is a type of valve used for regulating flow in a pipeline, consisting of a movable plug or disc element and a stationary ring seat in a body

Features :

Unbalanced

Top Guided

Noise Control / Anti Cavitation

Easy Maintenance and Customer Oriented

Special Design and Fabrication Capability According to Client's Special Offers

All the main fabrication steps such as Designing – Cage Drilling / Milling-Seat and Plug Coating Machining - Seat and Plug Lapping Test, Routine Tests, ... are doing by the PSM's exclusive equipment.

Options :

Linear / Equal / Quick Change / Modified Linear / Modified Equal Characteristics

Multi Hole Cages

Multi Stage Cage

Standard / High Capacity

Standard / Extension Bonnet

Oxygen Service / Cryogenic / Standard

Loop Test

Dead Band Test

Hysteresis Test

Metal / PTFE / Graphite Seal Ring

Through/Angle Body

Multi Hole / Countered Plug

Fieldbus Positioner / Special Instrument

Spring Diaphragm / Piston Spring Actuators

General Data :

Size: 3 / 4 - 8 in

Class: 150 - 2500

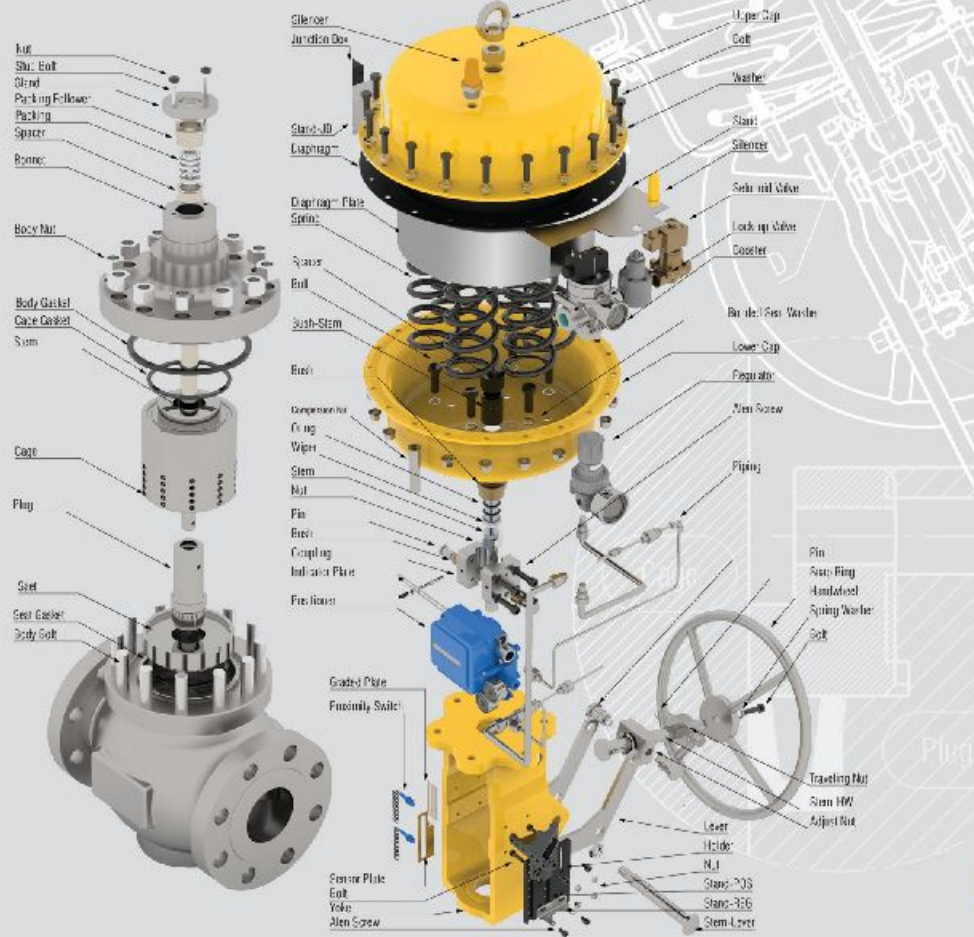
Connection: Weld (Socket/Butt), Flanged (RF/RTJ)

Body Material : Carbon Steel (A105), Stainless Steel (S.S316), Ductile Iron (WCB, WCC, CF8M, CF3M) Bronze, Monel, ...

Some of clients :

Pars Phenol Petrochemical Company / Arak Petrochemical Company / FanAvaran Petrochemical Company / Laleh Petrochemical Company





Control Reciprocating Globe Valve (38000 Series)

A globe valve, is a type of valve used for regulating flow in a pipeline, consisting of a movable plug or disc element and a stationary ring seat in a body

Features :

Precise Microflow Valves with Compact Design and Flexible Capabilities
Heavy Top - Guiding (valve plug support is provided along the entire stroke length)
Application Flexibility (Ten standard contoured trim designs using the same body platform)
Adjustable CV
Compact Assembly
Unbalanced
Anti - Cavitation Trim
Easy Maintenance and Customer Oriented
Special Design and Fabrication Capability According to Client's Special Offers
All the main fabrication steps such as Designing - Seat and Plug Coating - Machining - Seat and Plug Lapping Test, Routine Tests ... are doing by the PSM's exclusive equipment.

Options :

Linear / Equal / Quick Change / Modified Linear / Modified Equal Characteristics
Loop Test / Dead Band Test / Hysteresis Test
High pressure
Bellows seal
Cryogenic
Angle valve
NACE version
Fieldbus Positioner / Special Instruments
Spring Diaphragm Actuator

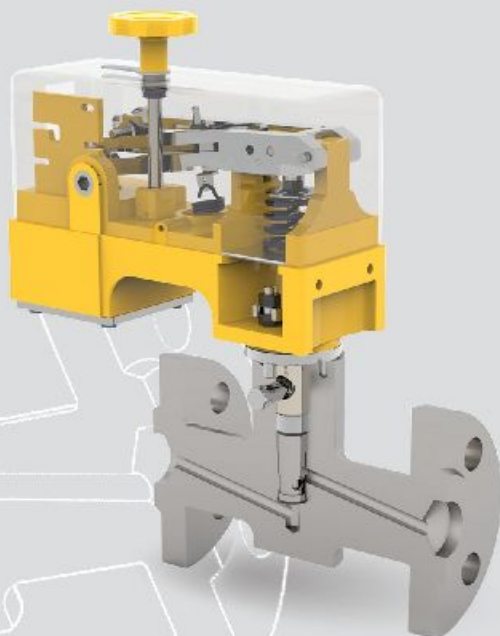
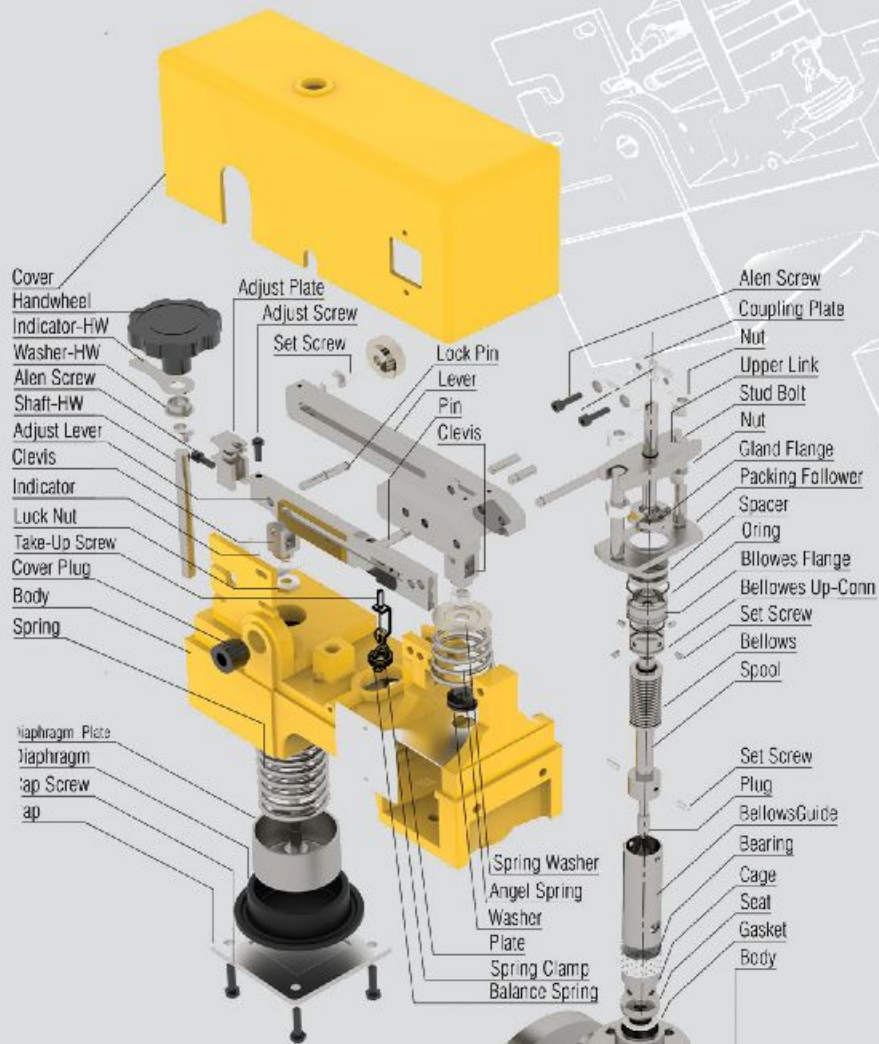
General Data :

Size : 1 / 2 - 1 1 / 2 in
Class : 150 - 2500
Connection : Weld (Socket/Butt), Flanged (RF/RTJ)
Body Material : Carbon Steel (A105), Stainless Steel (S.S316), Ductile Iron (WCB, WCC, CF8M CF3M), Bronze, Monel, ...

Some of clients :

Pars Phenol Petrochemical Company / Arak Petrochemical Company





General Ball Valve (35000 Series)

A ball valve is a form of quarter - turn valve which uses a hollow, perforated and pivoting ball to control flow through it. It is open when the ball's hole is in line with the flow and closed when it is pivoted 90 - degrees by the valve handle.

Features :

Special Design and Fabrication Capability According to Client's Special Offers

All the main fabrication steps such as Designing – Ball Grinding - Ball Coating-Machining - Seat and Ball Lapping, Routine Tests, ... are doing by the PSM's exclusive equipment.

Options :

Side Entry / Top Entry

One / Two / Three Piece

Multi Way

Double Block & Bleed

Floating / Trunnion

Metal / Soft Seat

Full / Reduced Bore

Oxygen Service / Cryogenic / Standard

Jacketed/Standard

Fire Safe

Special / Standard Coating

Lever Operated / Gearbox

Antistatic Device

Blowout Proof Stem

General Data :

Size : 1/ 2 - 32 in

Class : 150 - 2500

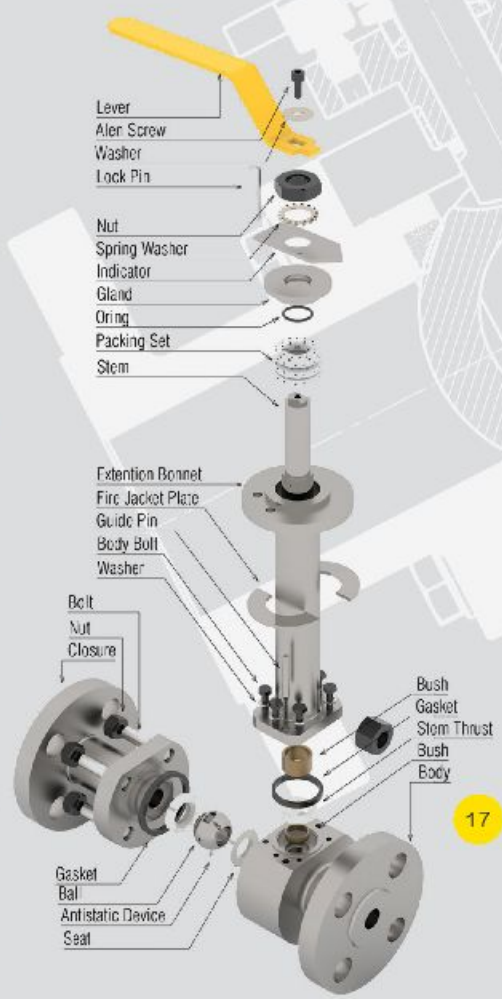
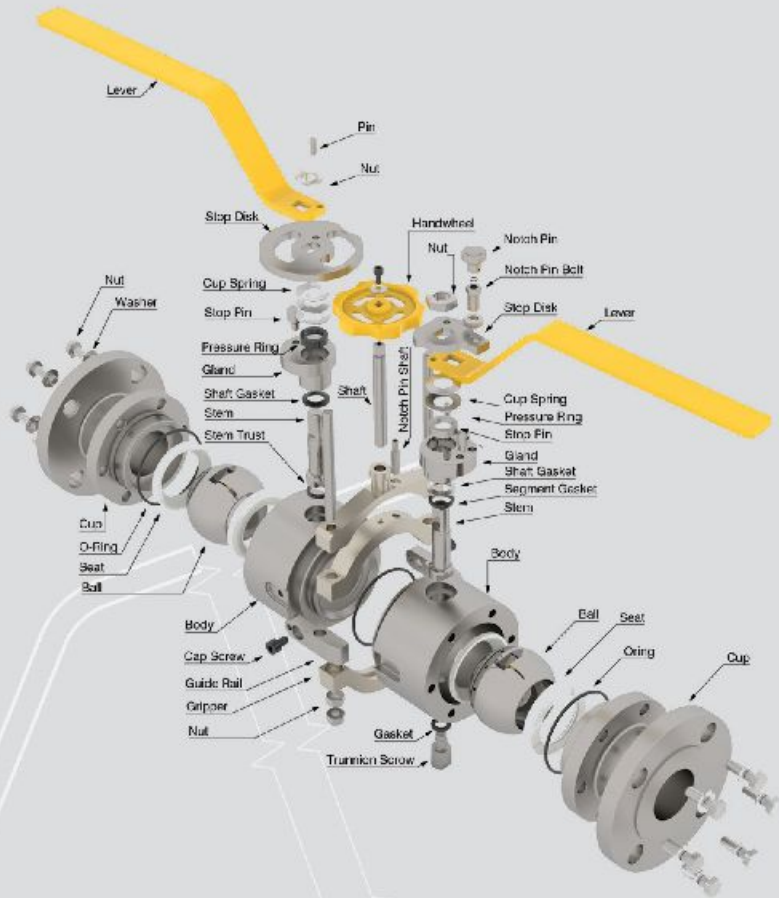
Connection : Weld (Socket / Butt), Threaded, Flanged (RF / RTJ)

Body Material : Carbon Steel (A105), Stainless Steel (S.S316), Ductile Iron (WCB, WCC, CF8M, CF3M)
Bronze, Monel, Brass

Some of clients :

Pars Phenol Petrochemical Company / Arak Petrochemical Company / Khangiran Petrochemical Company / Arya Sasol Polymer Company / Amirkabir Petrochemical Company





17



Control Ball Valve (45000 & 46000 Series)

A ball valve is a form of quarter - turn valve which uses a hollow, perforated and pivoting ball to control flow through it. It is open when the ball's hole is in line with the flow and closed when it is pivoted 90 - degrees by the valve handle.

45000 Series Control Ball Valve

Features :

Separable Bonnet design available

Straight through flow pattern provides greater flow capacities

The unique self - aligning eccentric rotating plug provides tight shut off and low dynamic forces.

A large variety of reduced trim options are available in all sizes

General Data :

Size: 1 - 24 in

Class: 150 - 2500

Connection : Weld (Socket / Butt), Threaded, Flanged (RF / RTJ)

46000 Series Control Ball Valve

Features :

High Capacity

Heavy Duty

Enhanced flow capacities

Excellent leakage control

Soft / Metal Seat

Reliable operation

Simplified maintenance

Body Type : Cast with integral bonnet

Body Material : Carbon steel / Stainless steel

Plug Type : high capacity "V" contoured segmented ball

Flow Characteristic : Equal percentage

Spring-Opposed Diaphragm / Spring - Opposed Rolling Diaphragm Actuators

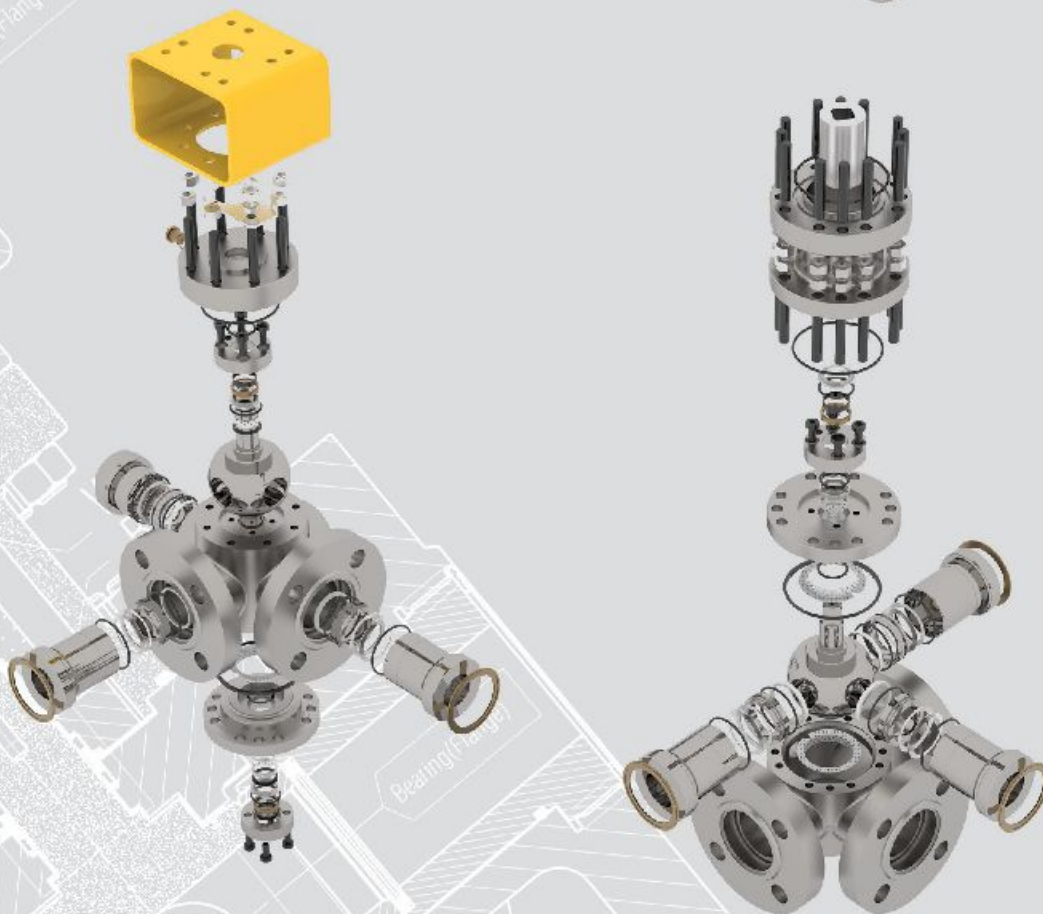
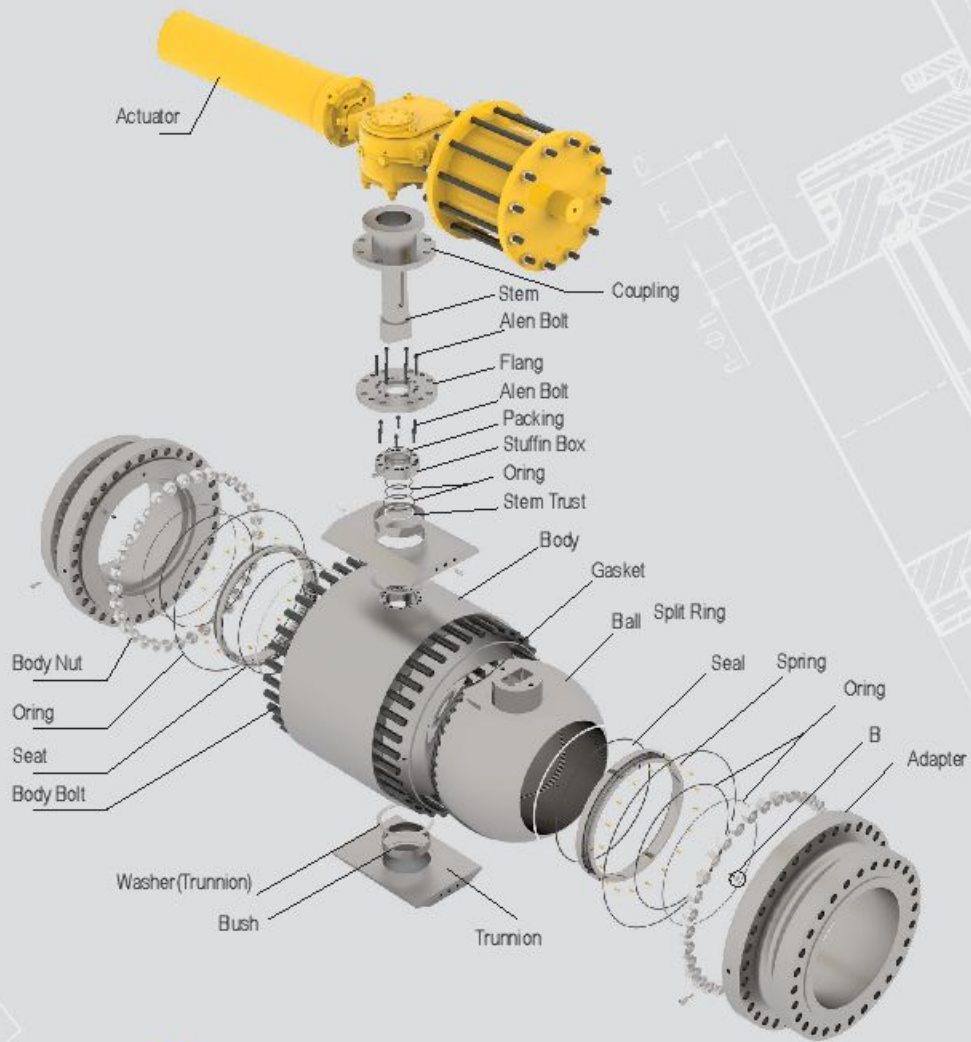
General Data :

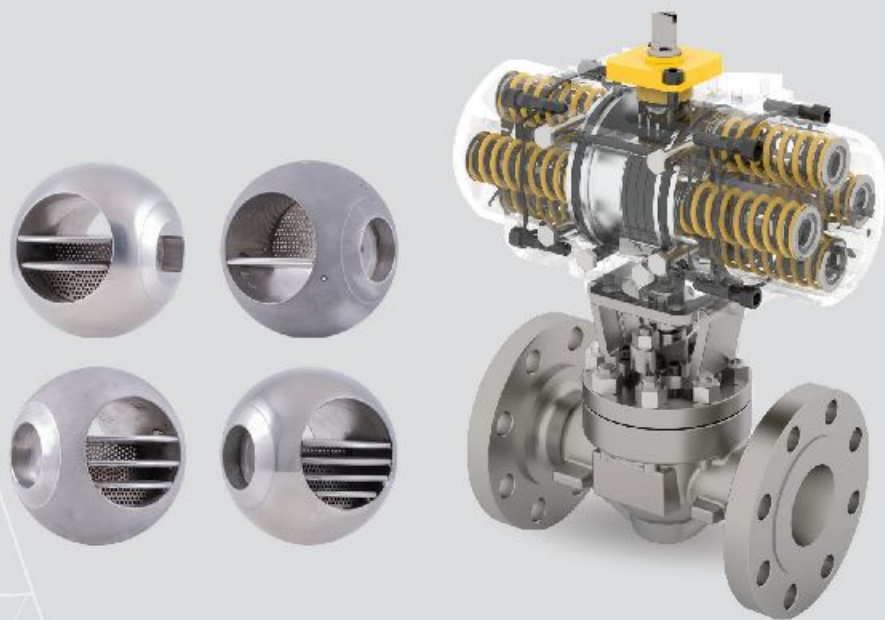
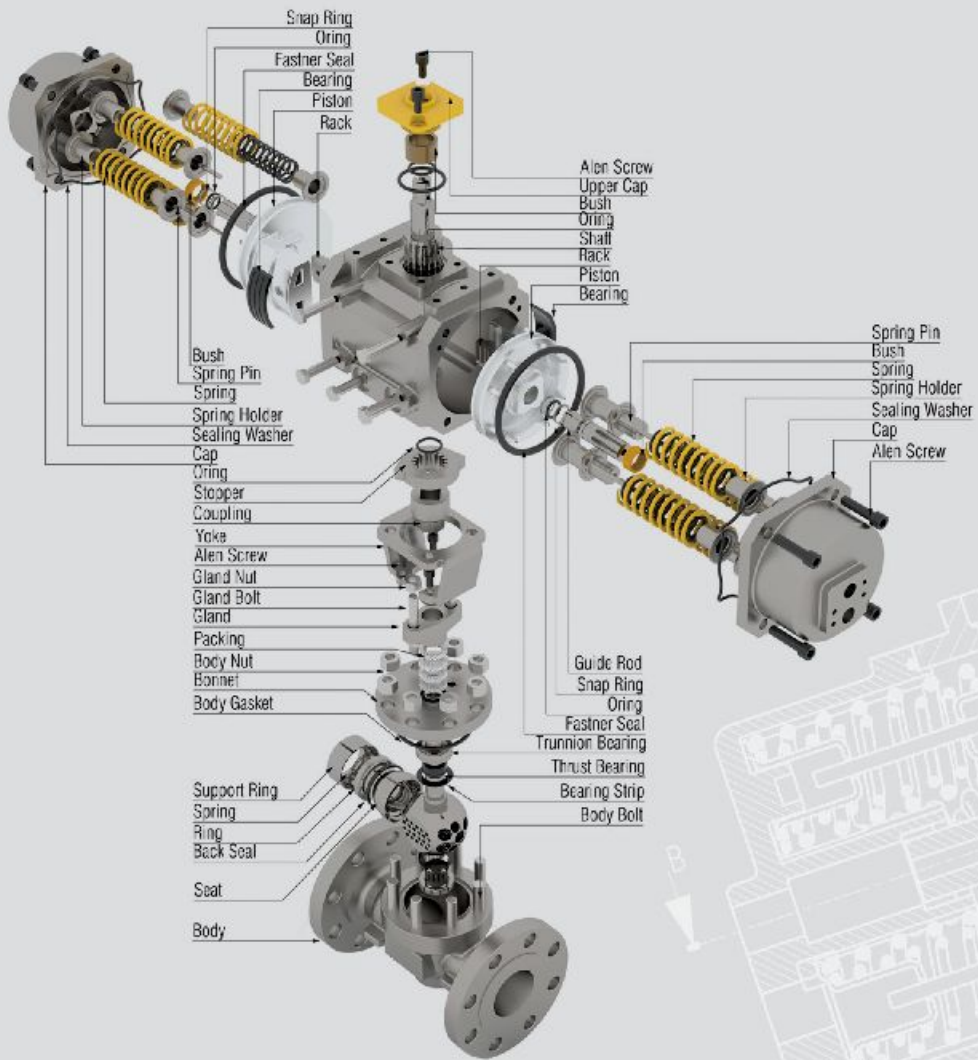
Size : 1 - 12 in

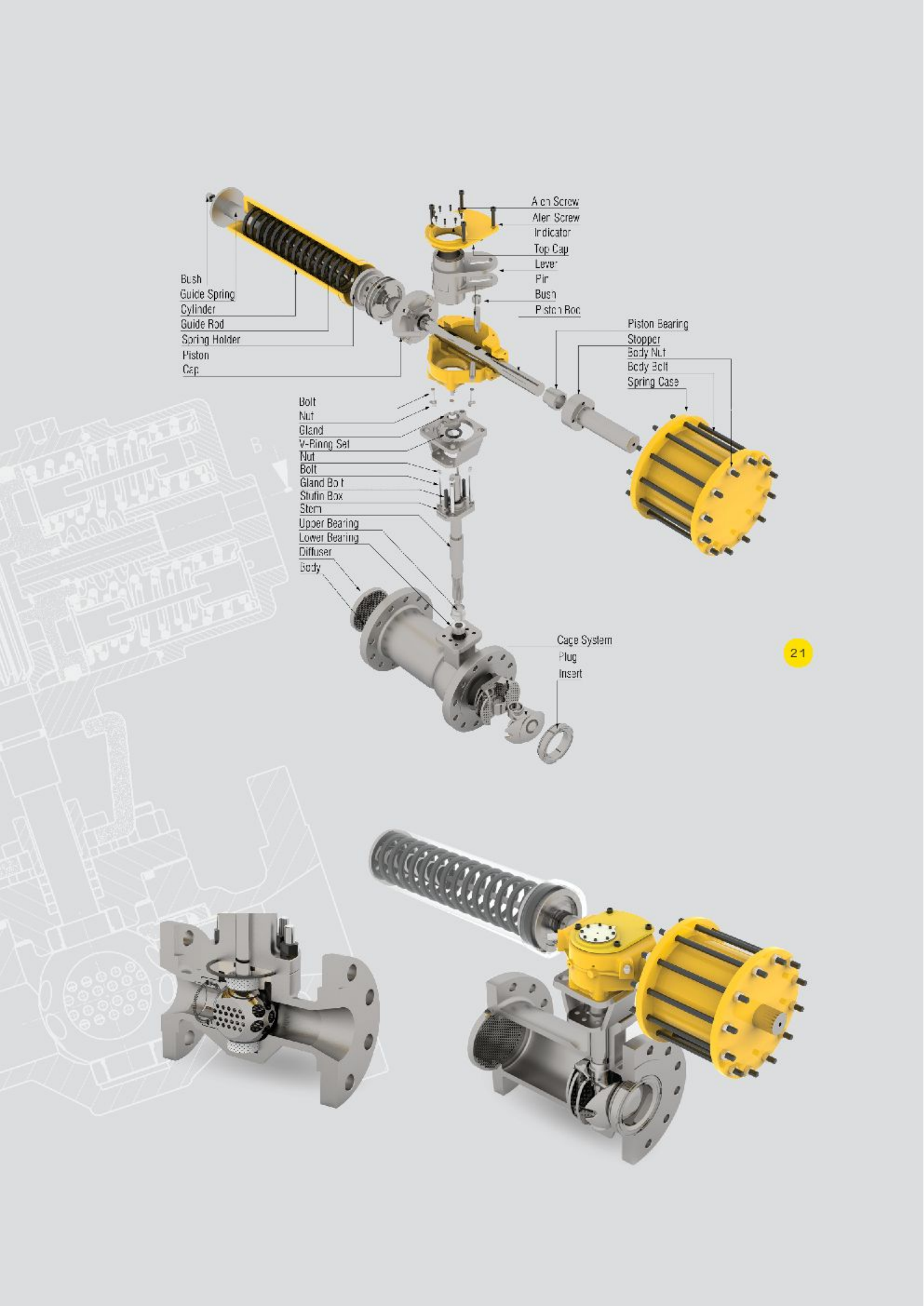
Class : 150 - 600

Connection : Flanged (RF / RTJ)









Bush
Guide Spring
Cylinder
Guide Rod
Spring Holder
Piston
Cap

A on Screw
Aler Screw
Indicator
Top Cap
Lever
Pir
Bush
Piston Rod

Piston Bearing
Stopper
Body Nut
Body Bolt
Spring Case

Bolt
Nut
Gland
V-Ring Set
Nut
Bolt
Gland Bolt
Stuff Box
Stem
Upper Bearing
Lower Bearing
Diffuser
Body

Cage System
Plug
Insert

General & Control Butterfly Valve (43000 & 53000 Series)

A butterfly valve is a valve that isolates or regulates the flow of a fluid. The closing mechanism is a disk that rotates.

Features :

Triple Offset Butterfly Valve
High Technology in Designing and Fabrication
Bi - directional
Self - Centering Disc
Higher Cv than Other Types
Removal of Keyways or Pins
Low / Zero Leakage
High flow rates
Extremely high cycle life
Special Design and Fabrication Capability According to Client's Special Offers
All the main fabrication steps such as Designing - Seat and Disk Coating - Machining - Seat and Disk Lapping, Routine Tests ... are doing by the PSM's exclusive equipment.

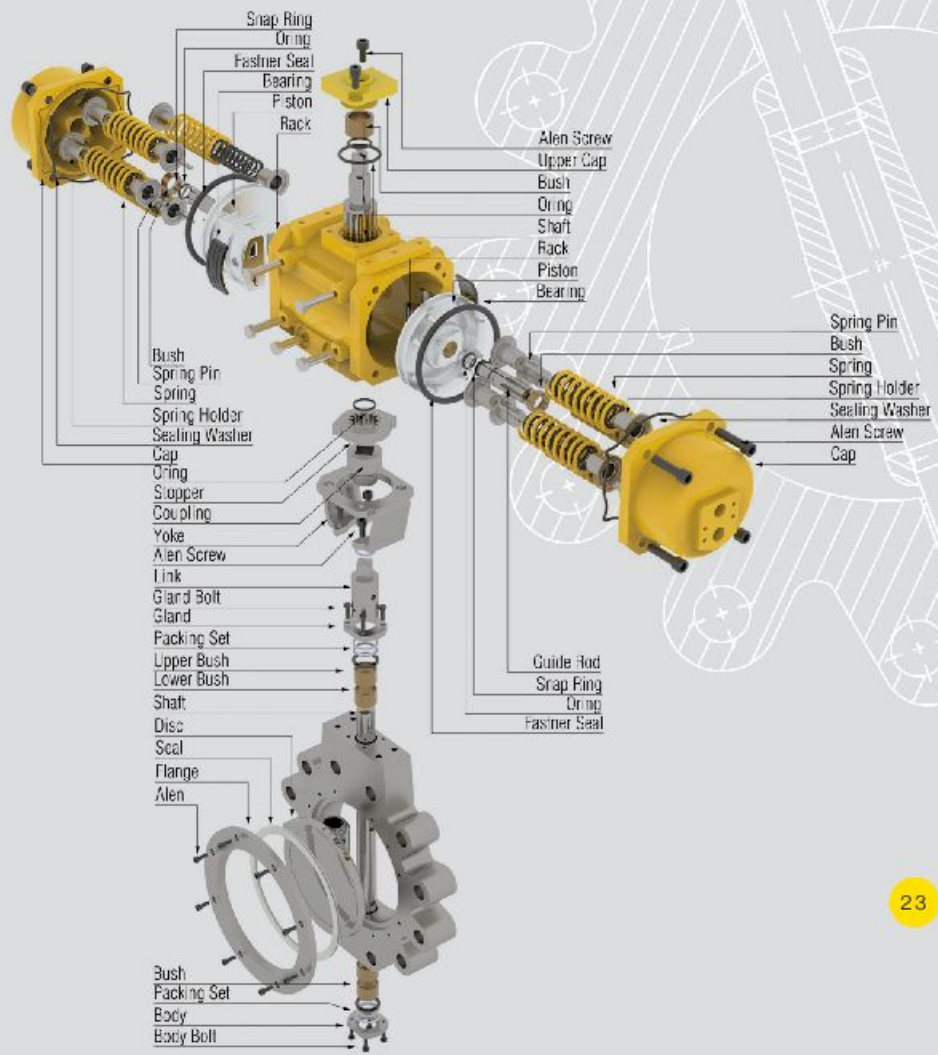
Options :

Cryogenic
Fire Safe
Body Material : Carbon steel (A105/WCC, ...) / Stainless steel (S.S.316/CF8M, ...) / Low Temperature
Carbon Steel LCC
Spring-diaphragm, floating stem pneumatic actuator (3 - 8 in valve)
Spring return, rolling diaphragm pneumatic actuator (3 - 8 in valve)
Scotch-yoke piston actuator (8 - 60 in valve)
Different Actuator Mounting Position

General Data :

Size : 3 - 60 in
Class : 150 - 2500
Connection : Wafer / Double Flanged (RF / RTJ) / Weld (Socket / Butt) / Lug





Rotary Globe Valve (62000 Series)

A globe valve, is a type of valve used for regulating flow in a pipeline, consisting of a movable plug or disc element and a stationary ring seat in a body

Features :

Easy Maintenance and Customer Oriented

Short and Reliable Delivery Time

Special Design and Fabrication Capability According to Client's Special Offers

All the main fabrication steps such as Designing –Coating-Machining- Lapping, Routine Tests, ... are doing by the PSM's exclusive equipment.

A large variety of reduced-trim options are available in all sizes.

Optional alloy constructions are available.

The valve position indicator is large and highly visible.

Options :

The flangeless body rating is a rugged ASME Class 600.

The flanged version is available in 1 in. through 12 in. (25 mm through 300 mm) sizes in 150 or 300 ASME, and 1 in. through 8 in. (25 mm through 200 mm) in 600 ASME.

Separable bonnet design is available.

Straight through flow pattern provides greater flow capacities.

Standard integral extension bonnet allows for a wide range of fluid temperature applications (-320°F to 750°F),(-196°C to 400°C).

The unique self-aligning eccentric rotating plug provides tight shutoff and low dynamic forces.

Loop Test/CV Test

Dead Band Test

Hysteresis Test

Metal/PTFE/Graphite Seal Ring

Full/Reduced Trim

Fieldbus Positioner/Special Instrument

General Data :

Size: 1 - 16 in

Class: 150 - 600

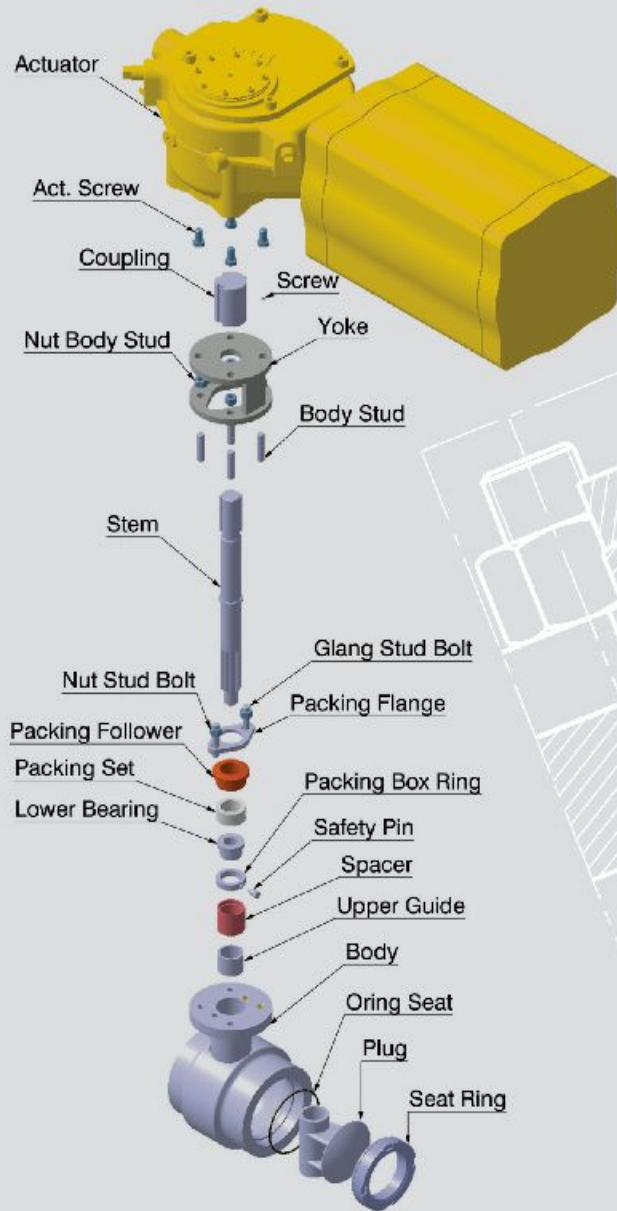
Connection: Weld (Socket/Butt), Threaded, Flanged (RF/RTJ)

Body Material: Carbon Steel (A105), Stainless Steel (S.S316), Ductile Iron (WCB, WCC, CF8M CF3M), Bronze, Monel, ...

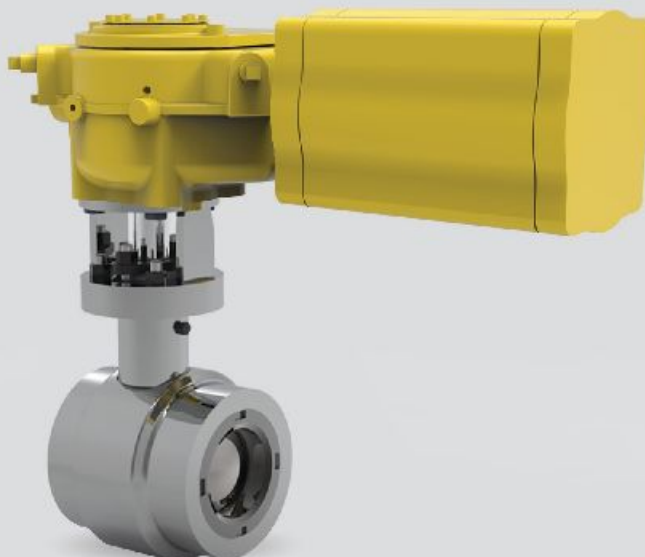
Some of clients :

Arak Refinery Company





25



Let Down High Temperature Valve (66000 Series)

The let down valve is an angle type valve. It designed according to (P) and (T) of the steam to match the downstream requirements.

Features :

- Pressure reducing stages
- Designed specific for each application
- Minimize noise
- Mechanical atomizing nozzles
- Spray water injection
- Temperature regulation
- Balance tight design resulting in reduced required opening force

Options :

- Extended outlet design
- Quick exchangeable seat

General Data :

- Size: 6 - 24 in
- Class : 150 - 2500
- Connection : Butt weld - Flanged
- Body, inlet & outlet Material, A105 / A182 - F12, A182 - F22 & A182 - F91
- Seat Material : A182 - F22 & A182 - F91
- Stem / Plug Material : AISI 616

Some of clients :

- Bushehr Petrochemical Company





Outlet Pipe

27



Top view

465 ±8



Desuperheater High Temperature Valve (65000 Series)

Desuperheater is a device that reduces the temperature of superheated steam so that it can be used in power plant &

Features :

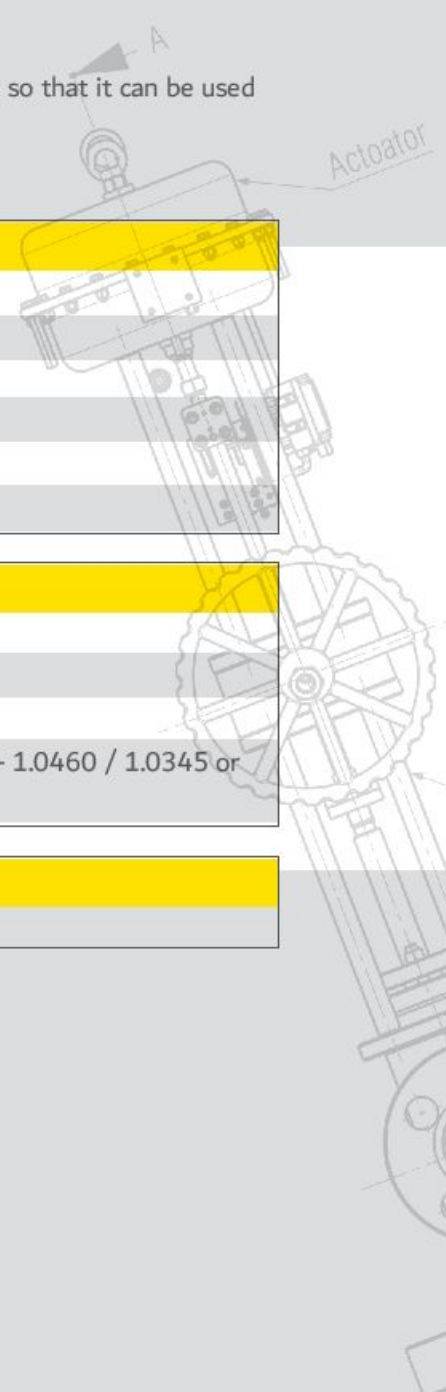
- Fabricated construction
- High quality stuffing box
- Fixed / Variable nozzle type
- Wide range of Cv (Kv) capacities available
- Special nozzle combination available
- Non / semi balanced internals for economic actuator selection

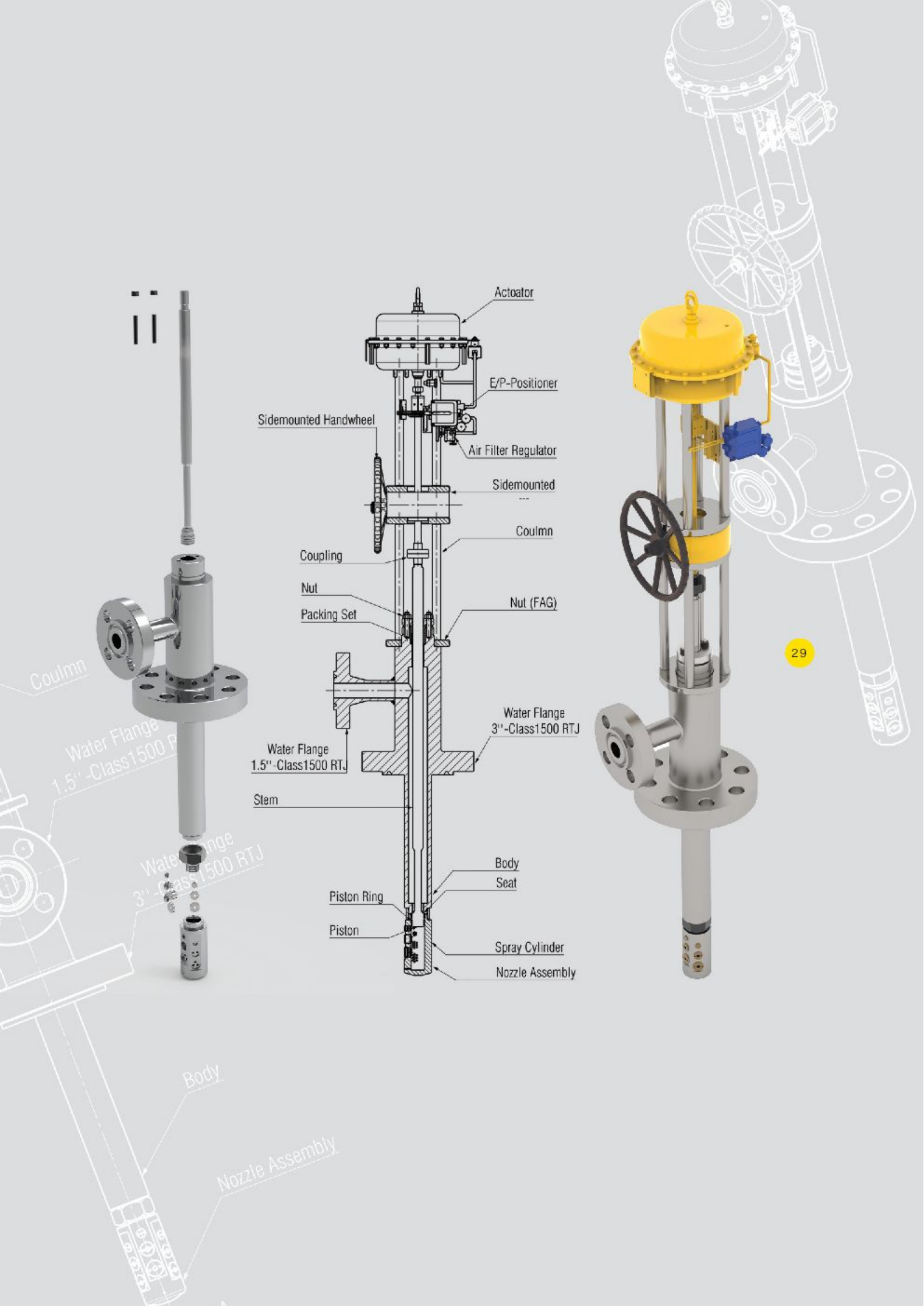
General Data :

- Size : 1 - 4 in
- Class : 150 - 1500
- Connection : Flanged (RF / RTJ)
- Body Material : ASTM (SA105) / (SA106 Gr . B or SA182F11 / SA335 P11 - 1.0460 / 1.0345 or 1.7335, other Material upon request

Some of clients :

- Bushehr Petrochemical Company





Piston Valve (10000 Series)

A piston valve is a device used to control the motion of a fluid along a tube or pipe by means of the linear motion of a piston within a chamber or cylinder.

Features :

Easy Maintenance and Customer Oriented

Short and Reliable Delivery Time

Special Design and Fabrication Capability According to Client's Special Offers

All the main fabrication steps such as Designing – Grinding - Coating - Machining - Lapping, Routine Tests, ... are doing by the PSM's exclusive equipment.

Full Bore - Low Pressure Drop

Options :

Welded Fabrication in different Material (Such as Stainless Steel (S.S.316, CF8M,304L,) , Carbon Steel (A105, ...), Duplex, Hastelloy, Monel, Inconel, ...

Polished Piston

Coated Piston

Radial piston sealing against packing rings

Rising non turning stem up to DN 32 included, turning non rising stem above

Position indicator

Outlet angle: 60° / 45°

Heating Jacket

Hard faced seat and / or piston seating surface (Stellite)

Bolted stuffing-box, self-adjusted with spring washers, repackable in service

Integral connection flanges class 150 - 2500

Conical metal - to - metal piston seating

Fixed or removable seat

Piston or Seat extension on request

Pneumatic, electric or hydraulic actuator / Manual override

General Data :

Size: 1 / 2 - 8 in

Class: 150 - 2500

Connection: Weld (Socket / Butt), Flanged (RF / RTJ)

Some of clients :

Lorestan Petrochemical Company / Bakhtar Petrochemical Company.





31



Safety Valve (57000 Series)

Desuperheater is a device that reduces the temperature of superheated steam so that it can be used power plant & ...

Features :

Easy maintenance and customer oriented

Short and reliable delivery time

Special Design and fabrication capability

according to client's special offers.

All the main fabrication steps such as

Designing - Grinding - Welding & Coating - Machining - Polish & Lapping - Test are doing by the PSM's exclusive equipment.

Options :

PSV - ASME SEC 1

Conventional Design Type

Different fabrication material

(Such as SS,SS316,CF8M,CF3M,WCB...)

High temperature service

Hard faced seat and nozzle (Stellite & SS316)

Spring loaded and Pop action

Polished seat and nozzle

Screw Cap & Plain Lifting Lever

Open Bonnet

Test Gage

General Data :

Size : 1 - 10 in

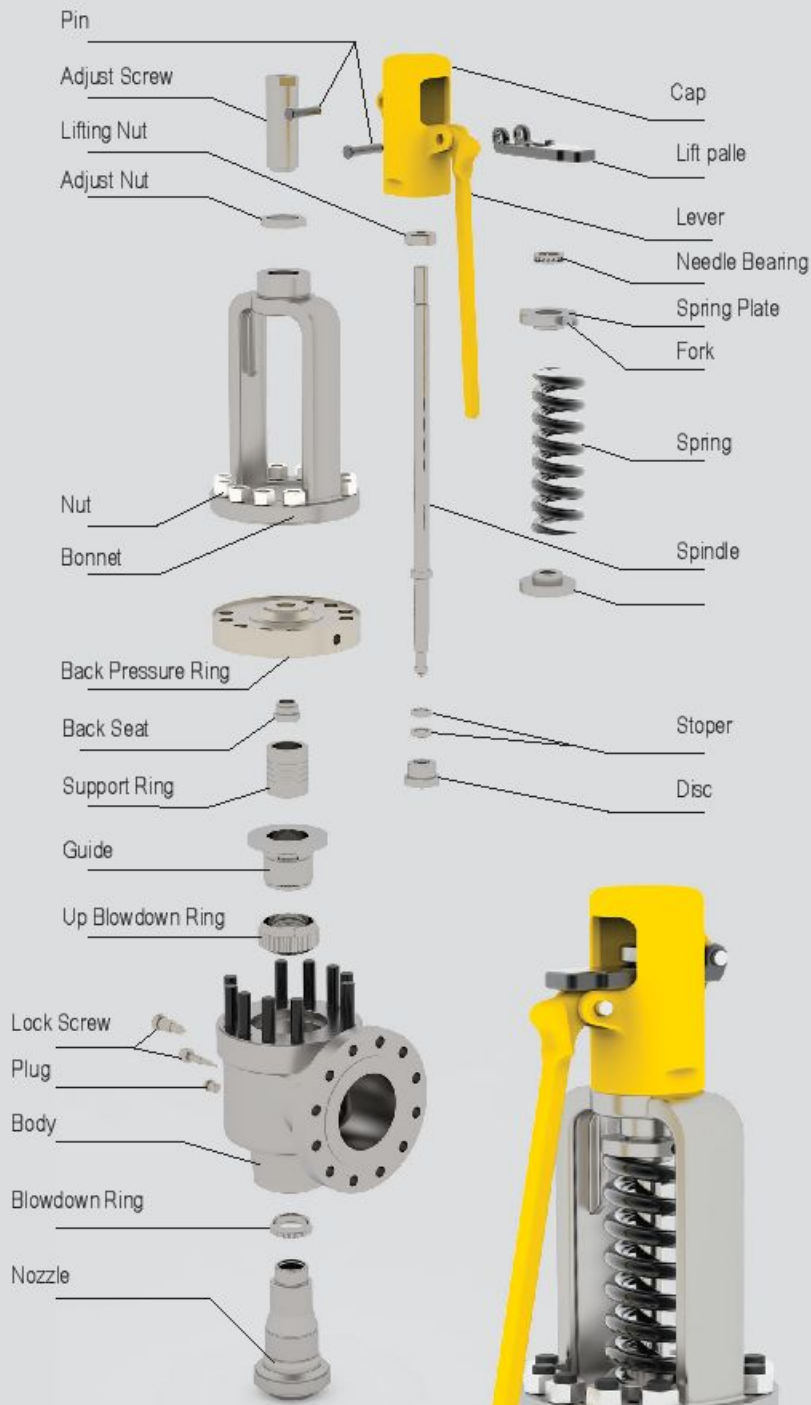
Class : 150 - 1500

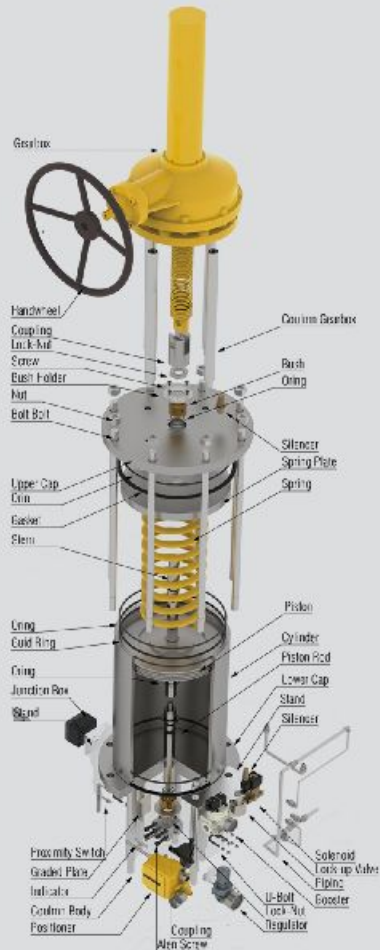
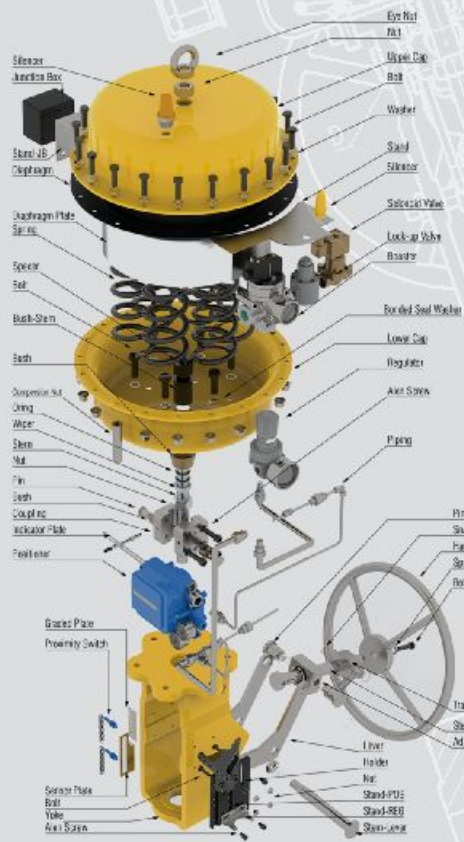
Connection : Screw and Butt Weld ,Flange (RF)

Some of Clients :

Bushehr Petrochemical Company







Pressure Reducing Regulators (70000 Series)

A pressure reducing regulator is a control valve that reduces the input pressure of a fluid to a desired value at its output. It is a normally-open valve and is installed upstream of pressure sensitive equipment.

Features :

- No Gas Emissions
- Bubble-Tight Shutoff
- Long Life in Severe Service Applications
- Precise Pressure Control
- Quiet Operation
- Full Pressure Rating
- Easy In-Line Maintenance
- High Turn Down Capability
- Travel Indicator
- Main Diaphragm
- Common Body Platform
- Full Usable Capacity.
- Disk Design
- Hydrogen Ready

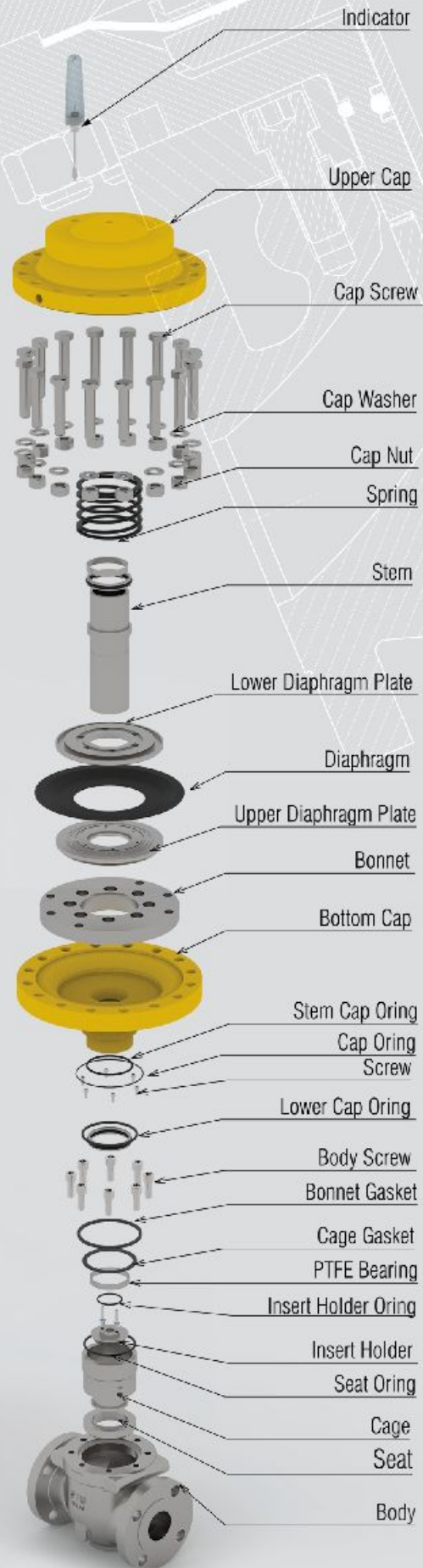
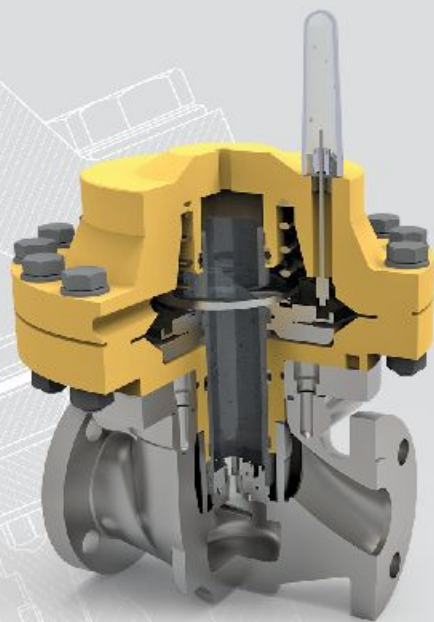
Options :

- Travel Indicator
- Whisper Trim™ Cage
- Relief Size-reduction Trim

General Data :

Spring-to-close pilot-operated pressure reducing regulator for low to high outlet pressure
Size: NPS 1-8in, NPS 12x6
End Connection: Weld (Socket/Butt), Flanged (RF)
Body Material: LCC or WCC Steel





PETRO SAZEH MIHAN CO.

Grade-1 knowledge enterprise company

Designing & Manufacturing of Control Valves







Loop Test Control Valve Capacity Test (CV)

To verify valve performance, Petro Sazeh Mihan tests its products under dynamic process conditions. Petro Sazeh Mihan employed its closed-loop control Test to verify the valve's characteristics & Coefficients. There are 5 special lines in this closed-loop control valve test bench which can cover test of control valves from 1/ 2" – 24".

We test the performance and flow capacity of all PSM-manufactured valves in our "Flow Lab" as in an actual closed-loop control system.

Evaluating control valve assemblies under closed-loop conditions provides the only true measure of variability performance. Closed-loop performance data proves significant reductions in process variability can be achieved by choosing the right control valve for the application.

Research within the industry has found the particular design features of the final control element, including the valve, actuator, and positioner, are very important in achieving good process control under dynamic conditions.

Some of the most important design considerations that test & verify in closed-loop control include :

- Deadband
- Actuator/positioner design
- Valve response time
- Valve type and characterization
- Valve sizing
- Valve Coefficients



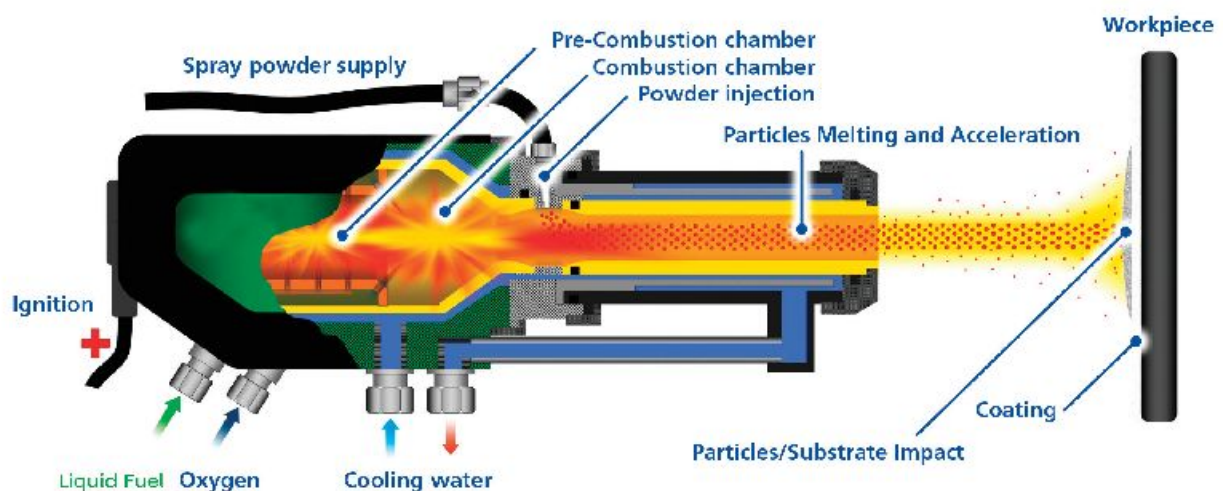
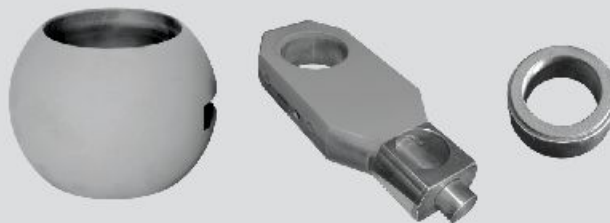
HVOF Thermal Spray

High Velocity Oxygen Fuel (HVOF) coating is a thermal spray process in which a fuel and oxygen are mixed, fed into a combustion chamber, and ignited. The gas produced in the combustion chamber has an extremely high temperature and pressure and is ejected through a nozzle at supersonic speeds. Powder is injected into the high velocity gas stream and propelled at the substrate to be coated. The result is a coating that has a low porosity and a high bond strength to the substrate material, which provides it with wear and / or corrosion resistance.

In the HVOF spraying process, the high velocity of the particles produces kinetic energy, which is more important than the temperature. One of the benefits of the HVOF spraying process is that extremely dense and hard coatings can be produced at relatively low temperatures.

HP-HVOLF

A new generation of HVOF systems, the so-called high-pressure HVOLF systems (HP-HVOLF), enable the efficient production of very dense carbide layers. The pressure in the combustion chamber (as one of the options to increase the efficiency of the system) needs to be regulated, in order to meet existing safety standards for oxygen supply. Kerosene/oxygen combustion is still the most environmentally friendly and the simplest solution for designing a new generation of high-performance HP-HVOF systems.



Benefits of HVOF Coating

Lower porosity (<1%)

Due to greater particle impact velocity

Higher hardness

Due to less degradation of carbide phases

Better wear resistance

Due to harder, tougher coatings

Lower oxide content (<1%)

Due to less in-flight exposure time

Retention of powder chemistry

Due to reduced time at temperature

Improve corrosion protection

Due to less Through Thickness porosity

Smoother as-sprayed surface

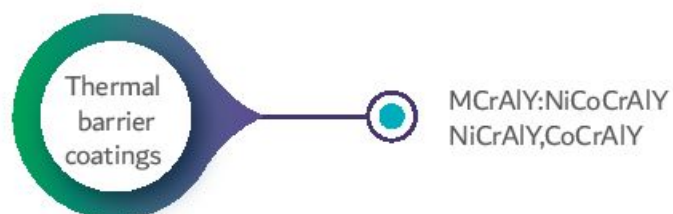
Due to higher impact velocities and smaller sizes

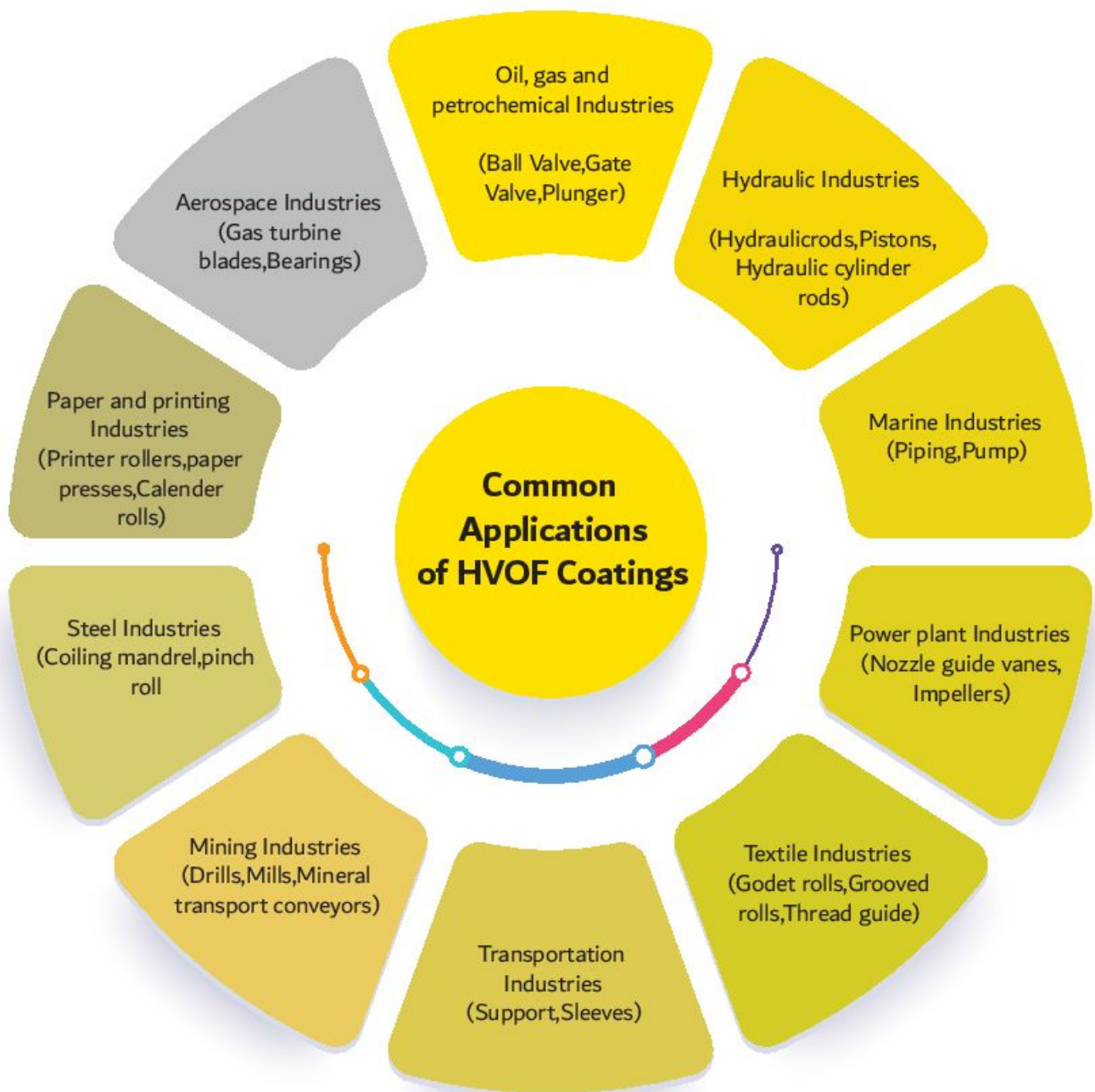
Higher strength bond to the substrate

Due to high particle kinetic energy



Commonly sprayed coating materials





Petro Sazeh Mihan (PSM.Co) as a designer and manufacturer of various types of control valves, has had many collaborating with great industries such as oil, gas, petrochemical, power plants and other related companies. These collaborations are including a wide range of reverse engineering, manufacturing, reconstruction, designing, coating, repairment and standard tests for different types of valves besides of consulting services in the field of selection and troubleshooting of control valves. Hence, the company is registered on the list of certified suppliers by the Ministry of Petroleum (AVL) and the vendor list of the most petrochemicals, refineries, other great industries

Some of companies which PSM.Co have the cooperation with them:

Clients

Pars Oil and Gas Company
شرکت نفت و گاز پارس

South Pars Gas Company
شرکت مجتمع گاز پارس جنوبی

Mobarakeh Steel Company
شرکت فولاد مبارکه اصفهان

National Iranian Copper Industries Co.
شرکت ملی صنایع مس

East oil and Gas Production company
شرکت بهره برداری نفت و گاز شرق

West oil and Gas Production company
شرکت بهره برداری نفت و گاز غرب

Iranian Offshore Oil Company
شرکت نفت فلات قاره ایران

Iranian Central Oil Fields Company
نفت مناطق مرکزی

National Iranian South Oil Company
نفت خیز جنوب

Thermal Power Plants Holding Company
شرکت مادر تخصصی تولید نیروی برق حرارتی

Iran Oil Pipelines and Telecommunications Company
شرکت خطوط لوله و مخابرات نفت ایران

Pars Glycol Petrochemical Company
پتروشیمی پارس گلاکول

AzarAb Industries
صنایع آذرآب

North Drilling
حفاری شمال

National Petrochemical Company
شرکت ملی صنایع

Terminal and Tanks petrochemical company
شرکت پایانه و مخازن پتروشیمی

Fakoor Meghnatis Spadana Co.
فکور مغناطیس اسپادانا

Kermanshah Petrochemical Industries Company (kpic)
شرکت صنایع پتروشیمی کرمانشاه

Ilam Petrochemical Company
پتروشیمی ایلام

Bushehr Petrochemical Company
پتروشیمی بوشهر

Diariapolymer Petrochemical Company
پتروشیمی دی آریا پلیمر خمین

Lavan Oil Refining Company
شرکت پالایش نفت لاوان

Jam Petrochemical company
شرکت پتروشیمی جم

Tabriz Petrochemical company
پتروشیمی تبریز

AryaSasol Petrochemical company
پتروشیمی آریاساسول

Pardis Petrochemical company
پتروشیمی پردیس

Razi Petrochemical company
پتروشیمی رازی

Morvarid Petrochemical company
پتروشیمی مروارید

Nori Petrochemical company
پتروشیمی نوری

Padjam Polymer
صنایع پلیمر پاد جم

SADRA Iran Marine Industrial Company

پایانه های نفتی

Terminal and Tanks petrochemical company
شرکت پایانه و مخازن پتروشیمی

Fakoor Meghnatis Spadana Co.
فکور مغناطیس اسپادانا

Kermanshah Petrochemical Industries Company (kpic)
شرکت صنایع پتروشیمی کرمانشاه

Ilam Petrochemical Company
پتروشیمی ایلام

Bushehr Petrochemical Company
پتروشیمی بوشهر

Diariapolymer Petrochemical Company
پتروشیمی دی آریا پلیمر خمین

Lavan Oil Refining Company
شرکت پالایش نفت لاوان

Jam Petrochemical company
شرکت پتروشیمی جم

Tabriz Petrochemical company
پتروشیمی تبریز

AryaSasol Petrochemical company
پتروشیمی آریاساسول

Pardis Petrochemical company
پتروشیمی پردیس

Razi Petrochemical company
پتروشیمی رازی

Morvarid Petrochemical company
پتروشیمی مروارید

Nori Petrochemical company
پتروشیمی نوری

Padjam Polymer
صنایع پلیمر پاد جم

SADRA Iran Marine Industrial Company

صدرا صنایع دریایی

Mobin Petrochemical Co.
مبین انرژی خلیج فارس

OEIC
مهندسی ساختمان صنایع نفت

Research an Technology
پژوهش پتروشیمی

Aria phosphorus Petrochemical
پتروشیمی آریا فسفریک

Kharazmi Petrochemical Co
پتروشیمی خوارزمی

Steam Engineering Co
شرکت استیم

SPEC Co
طراحی مهندسی و تامین قطعات و مواد پتروشیمی

PIDEC
طراحی و مهندسی صنایع پتروشیمی

Zagros Petrochemical Company
شرکت پتروشیمی زاگرس

Abadan Petrochemical Company
پتروشیمی آبادان

Kavian Petrochemical Corporation
پتروشیمی باخترکاوین

Aluminium Arak Company
ایرالکو آلومینیوم اراک

PIDEMCO
مدیریت توسعه صنایع پتروشیمی

Foolad Oxinsteel Co
شرکت فولاد اکسین خوزستان

Kangan Petro Refining Co. (KPRC)
شرکت پتروپالایش کنگان

Badre Shargh Petrochemical



Corporation

مجتمع پتروشیمی بدر شرق

Rampco

رامکو

Salman Farsi Petrochemical

پتروشیمی سلمان فارسی

Dehdasht Petrochemical Co

پتروشیمی دهدشت

OEIC

مجتمع پتروشیمی دهلران

Kermanshah Oil Refining Company

شرکت پالایش نفت کرمانشاه

Esfahan Petrochemical Company

پتروشیمی اصفهان

Tabriz Petrochemical Company

پتروشیمی تبریز

Khorasan Petrochemical Co.

شرکت پتروشیمی خراسان

Sarkhoon And Qeshm Gas Refinery

پالایشگاه گاز سرخون و قشم

Gachsaran Oil and Gas Co.

نفت و گاز گچساران

Boalisina Petrochemical Co

شرکت پتروشیمی بوعلی سینا

Aghajari Oil and Gas Co.

شرکت بهره‌برداری نفت و گاز آغاچاری

Narghan Engineering Co

مهندسی نارگان

Khozestan Petrochemical Company

پتروشیمی خوزستان

Enerchimi Engineering Co

مهندسی انرژی پتروشیمی

Imam Khomeini Oil Refinery

پالایشگاه نفت امام خمینی شازند

Esfahan Oil Refinery

پالایشگاه نفت اصفهان

Bandarabas Oil Refinery

پالایشگاه نفت بندر عباس

Tabriz Oil Refinery

پالایشگاه نفت تبریز

Abadan Oil Refinery

پالایشگاه نفت آبادان

Lavan Oil Refinery

پالایشگاه نفت لاوان

Pasargad Oil Co

شرکت نفت پاسارگاد

Bidboland Gas Refinery

پالایش گاز بید بلند خلیج فارس

Hasheminejad Gas Refinery

پالایش گاز هاشمی نژاد

Parsian Gas Refinery

پالایش گاز پارسیان

Fajzjam Gas Refinery

پالایش گاز فجر جم

Seraje Gas Refinery

پالایش گاز سراجه

Ilam Gas Refinery

پالایش گاز ایلام

Kordestan Petrochemical Company

پتروشیمی کردستان باختر

Parsglaykol Petrochemical Company

پتروشیمی پارس گلایکول باختر

Dipolemer Aria Petrochemical

Company

پتروشیمی دی پلیمر آریا

Miyandoab Petrochemical Company

پتروشیمی میاندوآب باختر

Bandaremamkhomeyni Petrochemical

Company

پتروشیمی بندر امام خمینی

Tondghoyan Petrochemical Company

پتروشیمی تندگویان

Fanavaran Petrochemical Company

پتروشیمی فن آوران

Laleh Petrochemical Company

پتروشیمی لاله

Amirkabir Petrochemical Company

پتروشیمی امیرکبیر

Karoon Petrochemical Company

پتروشیمی کارون

Arvand Petrochemical Company

پتروشیمی اروند

Fajr Petrochemical Company

پتروشیمی فجر

Ghajsaran Petrochemical Company

گچساران

Masjedsoleyman Petrochemical Co.

پتروشیمی مسجد سلیمان

Ghaedbasir Petrochemical Company

پتروشیمی قاید بصیر

Shazand Petrochemical Company

پتروشیمی شازند

Machine Sazi Arak

ماشین‌سازی اراک

South Zagros Oil and Gas Exploitation Company

شرکت بهره‌برداری نفت و گاز زاگرس جنوبی

Shazand Power Plant

نیروگاه برق شازند

Kerman Power Plant

نیروگاه برق کرمان

Iranian Gas Transmission Company

مناطق عملیات گازی

Distinct 2

منطقه گازی 2

Distinct 8

منطقه گازی 8

Distinct 6

منطقه گازی 6

Fooladhormozgan Steel Company

مجتمع فولاد هرمزگان

South Pars Gas Company

شرکت مجتمع گاز پارس جنوبی

MAPNA Group

گروه مپنا

Mobarakeh Steel Company

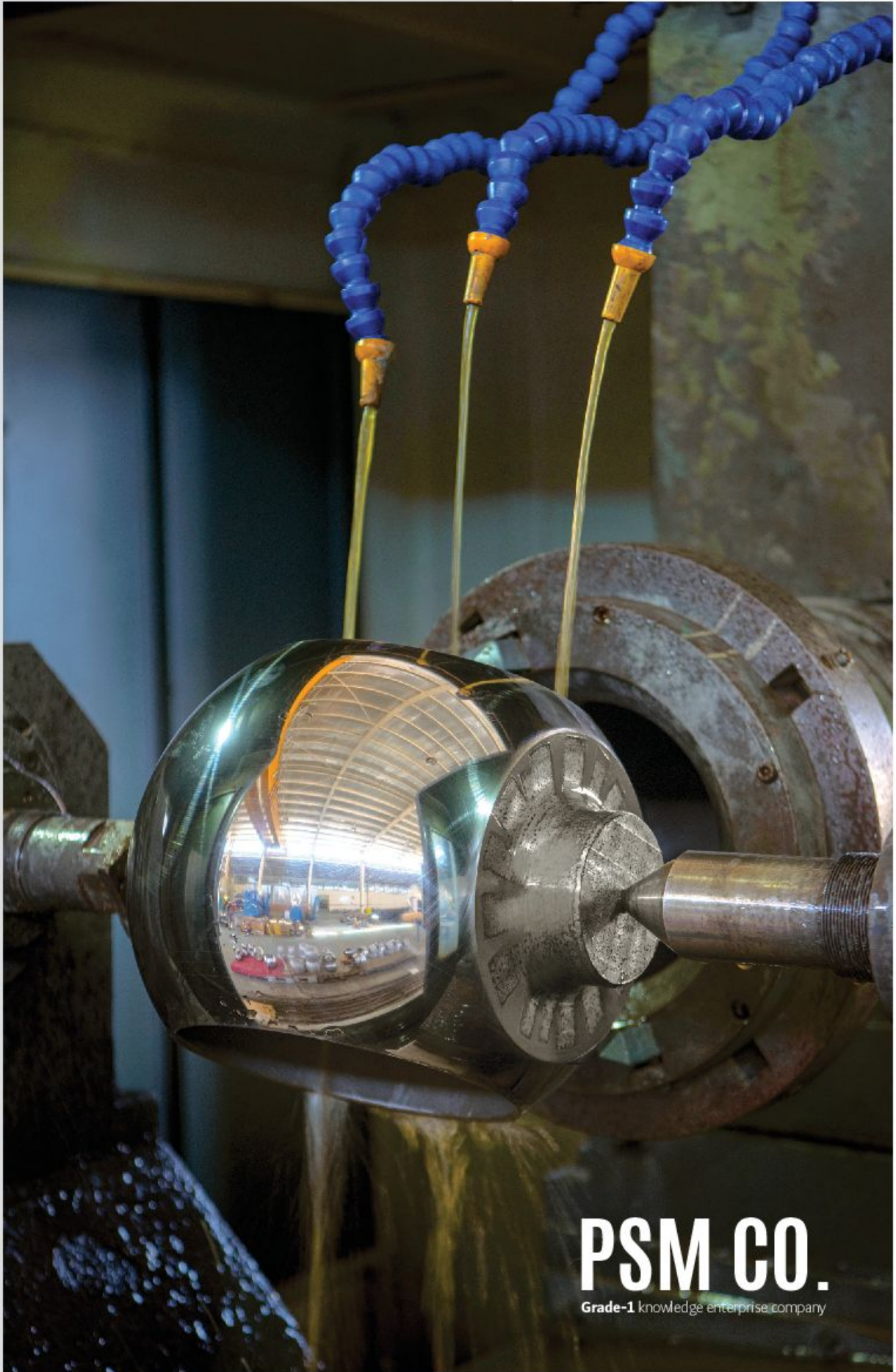
شرکت فولاد مبارکه اصفهان

National Iranian Copper Industries Co.

شرکت ملی صنایع مس ایران







PSM CO.
Grade-1 knowledge enterprise company

PETRO SAZEH MIHAN CO.

PSM | **Grade-1** knowledge enterprise company

Designing & Manufacturing of Control Valves



Factory : Sanat St., Hajiabad Industrial Zone, Arak Iran
Tell: (+98 86) 34131533 Fax: (+98 86) 34131533-115 Zip Code: 3819958199

www.psmvalve.com

info@psmvalve.com

psmvalve@gmail.com